



J138WA *and* J150WA

Operation and Maintenance Manual



☑ 3/8" J138WA

☑ 1/2" J150WA

WARNING



To reduce the risk of injury, read and understand these safety warnings and instructions before using the tool. Keep these instructions with the tool for future reference. If you have any questions, contact your **PROTO**® representative or distributor.

3/8" Drive Right Angle Impact
1/2" Drive Right Angle Impact

TABLE OF CONTENTS

Introduction	2
Safety Instructions	3
Specifications	4
Getting Started	5
Tool Components	6
Contact Information	8

INTRODUCTION

The PROTO® J138WA and J150WA are precision-built tools, designed for professionals for high torque assembly and disassembly of threaded fasteners. These tools will deliver efficient, dependable service when used correctly and with care. As with any fine power tool, for best performance the manufacturer's instructions must be followed. Please study this manual before operating the tool and understand the safety warnings and instructions. The instructions on installation, operation and maintenance should be read carefully, and the manuals kept for reference. NOTE: Additional safety measures may be required because of your particular application of the tool. Contact your PROTO® Distributor with any questions concerning the tool and its use.

PROTO INDUSTRIAL TOOLS®
2195 East View Parkway
Suite 103
Conyers, Georgia 30013
Phone: +1 800-800-TOOL
Fax: +1 770-648-9108
www.protoindustrial.com

WARRANTY

We warrant that this tool shall be free from manufacturing defects for a period of ONE YEAR from the original purchase date. Our obligation to the original purchaser shall be limited to repairing or replacing, at our expense (not including shipping charges) a defective tool if returned by the original purchaser within two years from the date of purchase, all incoming shipping charges prepaid. THIS WARRANTY DOES NOT COVER DEFECTS OR DAMAGES TO THE TOOL (i) after the warranty period expires; (ii) resulting from misuse or abnormal operation; (iii) resulting from a failure to properly lubricate, maintain or operate the tool; or (iv) resulting from any repair or maintenance services performed by any party other than PROTO® at all DeWALT Service Centers or a person authorized by PROTO® to provide repair and maintenance services for this tool.



WARNING

IMPORTANT SAFETY INFORMATION ENCLOSED.
READ THIS MANUAL BEFORE OPERATING THE MACHINE.

FAILURE TO OBSERVE THE FOLLOWING WARNINGS COULD RESULT IN INJURY.



Do not use damaged, frayed or deteriorated air hoses and fittings.



Always wear hearing protection when operating this tool.



Air powered tools can vibrate in use. Vibration, repetitive motions or uncomfortable positions may be harmful to your hands and arms. Stop using any tool if discomfort, tingling feeling or pain occurs. Seek medical advice before resuming use.



Always turn off the air supply and disconnect the air supply hose before installing, removing or adjusting any accessory on this tool, or before performing any maintenance on this tool.



Do not carry the tool by the hose.



Always wear eye protection when operating or performing maintenance on this tool.



Keep body stance balanced and firm. Do not over-reach when operating this tool.



Operate at 90 psig (6.2 bar / 620 kPa) Maximum air pressure.

GENERAL SAFETY INSTRUCTIONS



WARNING

- ▶ Always wear ANSI Z87.1 eye protection when operating or performing maintenance on this tool. Everyday eye glasses are not safety glasses.
- ▶ Always wear hearing protection when operating this tool.
- ▶ Keep hands, loose clothing and long hair away from rotating end of tool.
- ▶ Anticipate and be alert for sudden changes in motion during start up and operation of any power tool.
- ▶ Keep body stance balanced and firm. Do not overreach when operating this tool.
- ▶ Do not operate this tool for long periods of time. Vibration caused by tool action may be harmful to your hands and arms. Stop using any tool if discomfort, tingling feeling or pain occurs. Seek medical advice before resuming use.
- ▶ Use rated accessories recommended by PROTO® only. Inspect accessories before use. Do not use cracked or damaged accessories.
- ▶ Do not operate this tool in the presence of flammable liquids, gasses, dust, or explosive atmospheres
- ▶ This tool is not insulated against electric shock.
- ▶ For safety, top performance, and maximum durability of parts, operate this tool at 90 psig. (6.2 bar / 620 kPa) maximum air pressure at the inlet with 3/8" (10mm) inside diameter air supply hose.
- ▶ Always turn off the air supply and disconnect the air supply hose before installing, removing or adjusting any accessory on this tool, or before performing any maintenance on this tool.
- ▶ Do not use damaged, frayed or deteriorated air hoses and fittings.
- ▶ Do not lubricate tools with flammable or volatile liquids such as kerosene, diesel or jet fuel.
- ▶ Do not remove any labels. Replace any damaged label.

SPECIFICATIONS



Lightweight Design

Low Profile
Right Angle Head

Ergonomic Comfort
Grip Handle

Control Ring for Easy Forward /
Reverse and High / Low Power

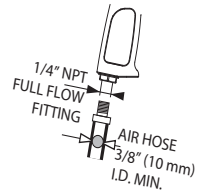
SPECIFICATIONS

Model #	Square Drive in	Blow Rate		Breakaway Torque ft-lbs / Nm	Noise Level						Vibration Level m/s ²	
		forward (bpm)	reverse (bpm)		Pressure dB(A)	Power dB(A)	Pressure dB(C)	Pressure dB(C)	Pressure dB(C)	Pressure dB(C)		
J138WA	3/8	1600	1700	170 / 230	96	3*	107	3*	120	3*	46.52	14.61**
J150WA	1/2	1600	1700	200 / 271	98	3*	109	3*	123	3*	29.96	14.35**

Model #	Free Speed rpm	Average Air Consumption cfm / l/min	Working Pressure psi / bar	Weight lbs / kg	Dimensions in / mm	
					in	mm
J138WA	7200	5 / 143	90 / 6.2	4.0 / 1.8	13.9 x 2.5 x 3.1	353 x 63 x 80
J150WA	7200	5 / 143	90 / 6.2	4.0 / 1.8	13.9 x 2.5 x 3.1	353 x 63 x 80

* = measurement uncertainty in dB(A)

** = measurement uncertainty in m/s²



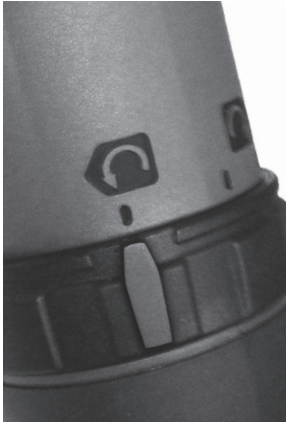
Use Hi-Flow air plugs and couplers
for maximum tool performance

GETTING STARTED

- › Always operate, inspect and maintain this tool in accordance with all regulations (local, state, federal and country) that may apply to hand-held / hand-operated pneumatic tools.
- › Be sure all hoses and fittings are the correct size and are tightly secured.
- › Always use clean, dry air at 90 psig maximum air pressure. Dust, corrosive fumes and/or excessive moisture can ruin the motor of an air tool.
- › The use of a hose whip is recommended. A coupler connected directly to the air inlet increases tool bulk and decreases tool maneuverability.
- › For maximum performance, the coupler on the wall should be the next size larger than the coupler used on the tool. The coupler closest to the tool should not be less than the proper air supply hose size.

OPERATING FEATURES

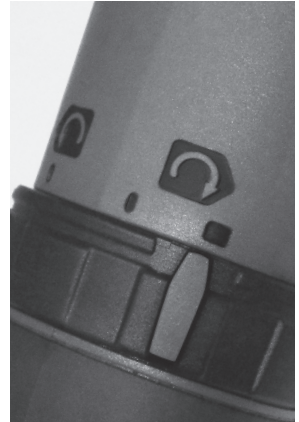
Reverse Position



Forward Position - Low Power



Forward Position - High Power

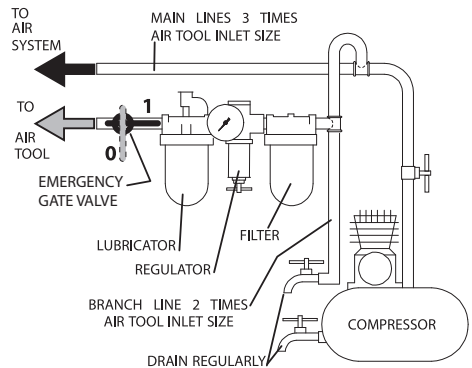


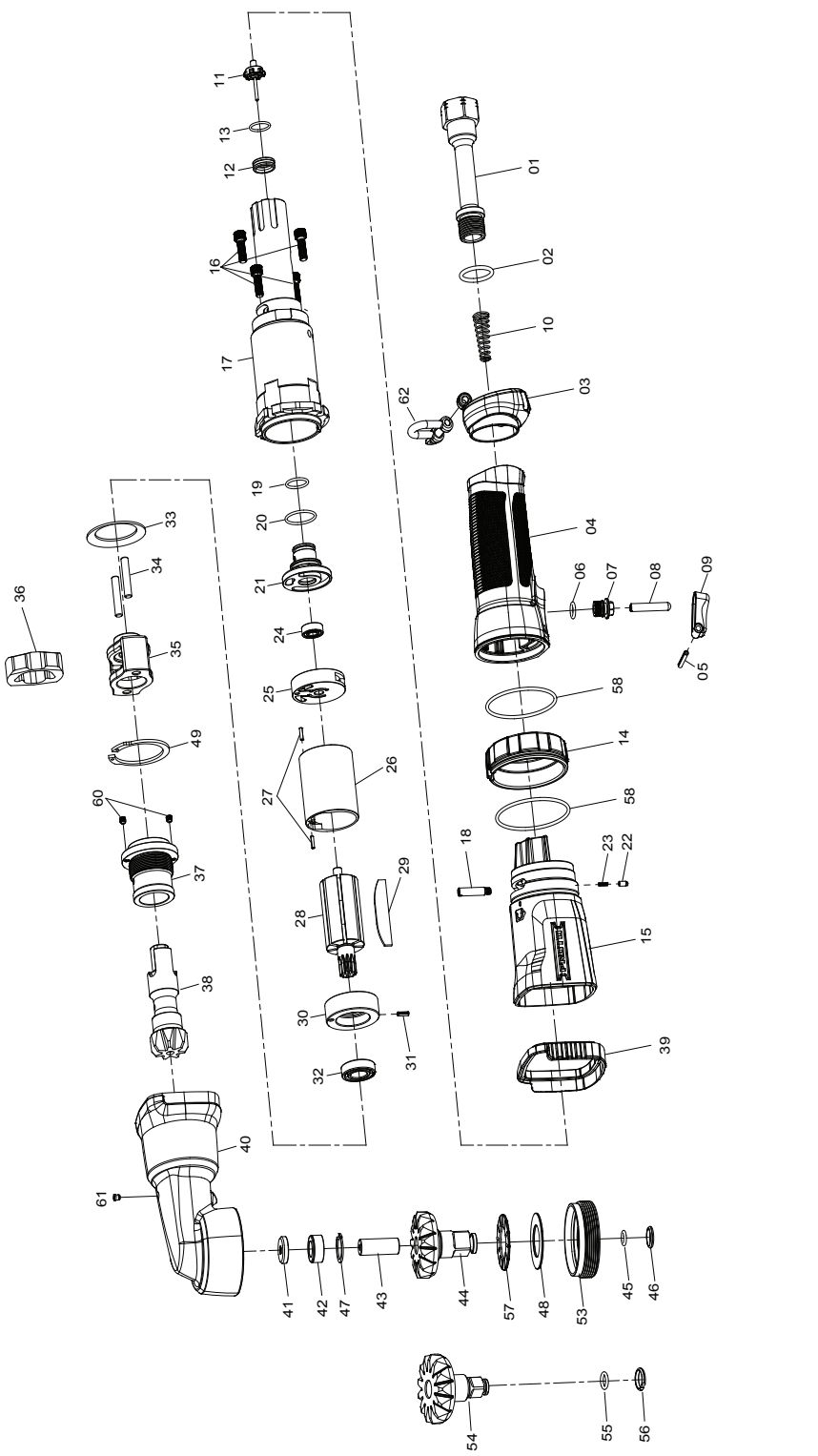
PLACING TOOL IN SERVICE

LUBRICATION



Always use an air line lubricator with this tool. After every eight hours of operation, if a lubricator is not used on the compressed air network, inject 1/2 to 1cm³ of approved air tool oil through the machine's inlet connection.





ITEM #	PART #	DESCRIPTION	QTY
	J138WA	3/8" Right Angle Impact	
	J150WA	1/2" Right Angle Impact	
1	30P200035	AIR INLET	1
2	30R200270	O-RING	1
3	30H200432	EXHAUST DEFLECTOR - PROTO	1
4	30H100035-02	HANDLE WITH GRIP - PROTO	1
5	30R200271	LOCK (SPRING) PIN	1
6	30R200272	O-RING P7	1
7	30P200038	VALVE STEM SEAT	1
8	30P200039	VALVE STEM	1
9	30P200023	TRIGGER	1
10	30R200273	VALVE SPRING	1
11	30P100040	THRITTLE TIP VALVE ASSEMBLY	1
		THRITTLE VALVE - BEVEL TYPE	1
		THRITTLE VALVE - PIN TYPE	1
12	30P200036	THRITTLE VALVE SEAT	1
13	30R200274	O-RING	1
14	30H200381	REVERSE RING	1
15	30H200430	HOUSING - PROTO	1
15-1	30L200101	LABEL- SPECIFICATION (1/2" - not shown)	1
15-2	30L200100	LABEL- SPECIFICATION (3/8" - not shown)	1
16	30R200275	SCREW (M5*16) WITH WASHER	4
17	30H200435	INNER HANDLE	1
18	30R200276	PIN	1
19	30R200277	O-RING	1
20	30R200278	O-RING	1
21	30P200037	REVERSE VALVE	1
22	30R200279	DETENT PIN	1
23	30R200280	DETENT SPRING	1
25	30M200085	REAR END PLATE	1
26	30M200086	CYLINDER	1
27	30R200282	LOCK (SPRING) PIN	2
28	30M200087	ROTOR	1
30	30M200089	FRONT END PLATE	1
31	30R200283	LOCK (SPRING) PIN	1
33	30R200285	MOTOR CLAMP WASHER	1
39	30H200382-01	GASKET	1
58	30R200323	O-RING S-46 (45.5*2)	2
62	30H200434-01	SS SHACKLE, BOLT -4XW. (Ø:16mmL:18.2 mm)(W)	1
	30M100130	MOTOR TUNE-UP KIT	
24		BEARING	1
29		BLADE	7
32		BEARING	1

ITEM #	PART #	DESCRIPTION	QTY
	30D100040	IMPACT ASSEMBLY	2
34		HAMMER PIN	1
35		HAMMER FRAME	1
36		HAMMER	1
	30D100042	HEAD ASSEMBLY - 3/8"	
37		BUSHING - PINION GEAR	1
38		SHAFT - PINION GEAR	1
40		ANGLE HEAD (includes 41, 42, 61)	1
41		WASHER	1
42		BUSHING - BEVEL-UPPER	1
43		PIN- BEVEL GEAR	1
54		3/8" ANVIL-BEVEL GEAR	1
55		O-RING P7 FOR 3/8" SQ.DR.	1
56		RETAINER FOR 3/8" SQ.DR.	1
47		RETAINING RING	1
48		WASHER	1
49		RETAINING RING	1
53		NUT - HEAD	1
57		NEEDLE THRUST BEARING	1
60		SET SCREW (M4*PO.7-4L)	2
61		GREASE FITTING	1
	30D100041	HEAD ASSEMBLY - 1/2"	
37		BUSHING - PINION GEAR	1
38		SHAFT - PINION GEAR	1
40		ANGLE HEAD (includes 41, 42, 61)	1
41		WASHER	1
42		BUSHING - BEVEL-UPPER	1
43		PIN- BEVEL GEAR	1
44		1/2" ANVIL-BEVEL GEAR	1
45		O-RING P6 FOR 1/2" SQ.DR.	1
46		RETAINER FOR 1/2" SQ.DR.	1
47		RETAINING RING	1
48		WASHER	1
49		RETAINING RING	1
53		NUT - HEAD	1
57		NEEDLE THRUST BEARING	1
60		SET SCREW (M4*PO.7-4L)	2
61		GREASE FITTING	1

J138WA and J150WA

Operation and Maintenance Manual

TETHERING THE TOOL



Use **ONLY** the following load rated Connector for tool suspension: Steel Wire, Stainless 316, Max. Load Capacity 800 lb., Eye Inside Dia. 1/2 in., Overall Length 1 15/16 in., Opening 1/4 in., Stock Thickness 3/16 in. Type : Load Rated



WARNING

Do **NOT** use the following type or any other type of connector, serious injury could occur.



Check threaded stud periodically.

Thread-locker recommended.

If tool is dropped, replace all tether parts.

CUSTOMER SERVICE

We at PROTO® are committed to our customers, please reference the following phone number for a direct contact to one of our customer technicians. They will be more than happy to help with any service or warranty questions you may have about your power tool.

PROTO INDUSTRIAL TOOLS®
2195 East View Parkway
Suite 103
Conyers, Georgia 30013
Phone: +1 800-800-TOOL
Fax: +1 770-648-9108
www.protoindustrial.com

CE DECLARATION OF CONFORMITY

WE, PROTO INDUSTRIAL TOOLS®, 2195 EAST VIEW PARKWAY, SUITE 103, CONYERS, GEORGIA 30013, DECLARE UNDER OUR SOLE RESPONSIBILITY THAT THE PRODUCT **J138WA - PROTO 3/8" RIGHT ANGLE IMPACT** AND **J150WA - PROTO 1/2" RIGHT ANGLE IMPACT** - CONFORMS WITH THE DIRECTIVE AND STANDARDS «MACHINERY» DIRECTIVE 2006/42/CE - AND IS IN CONFORMITY WITH THE PROVISIONS OF THE HARMONISED EUROPEAN STANDARD
EN ISO 12100:2010
EN ISO 11148-6:2012
EN ISO 15744:2002
EN ISO 28927-2:2009



Eric Min
QUALITY MANAGER
05.10.2013