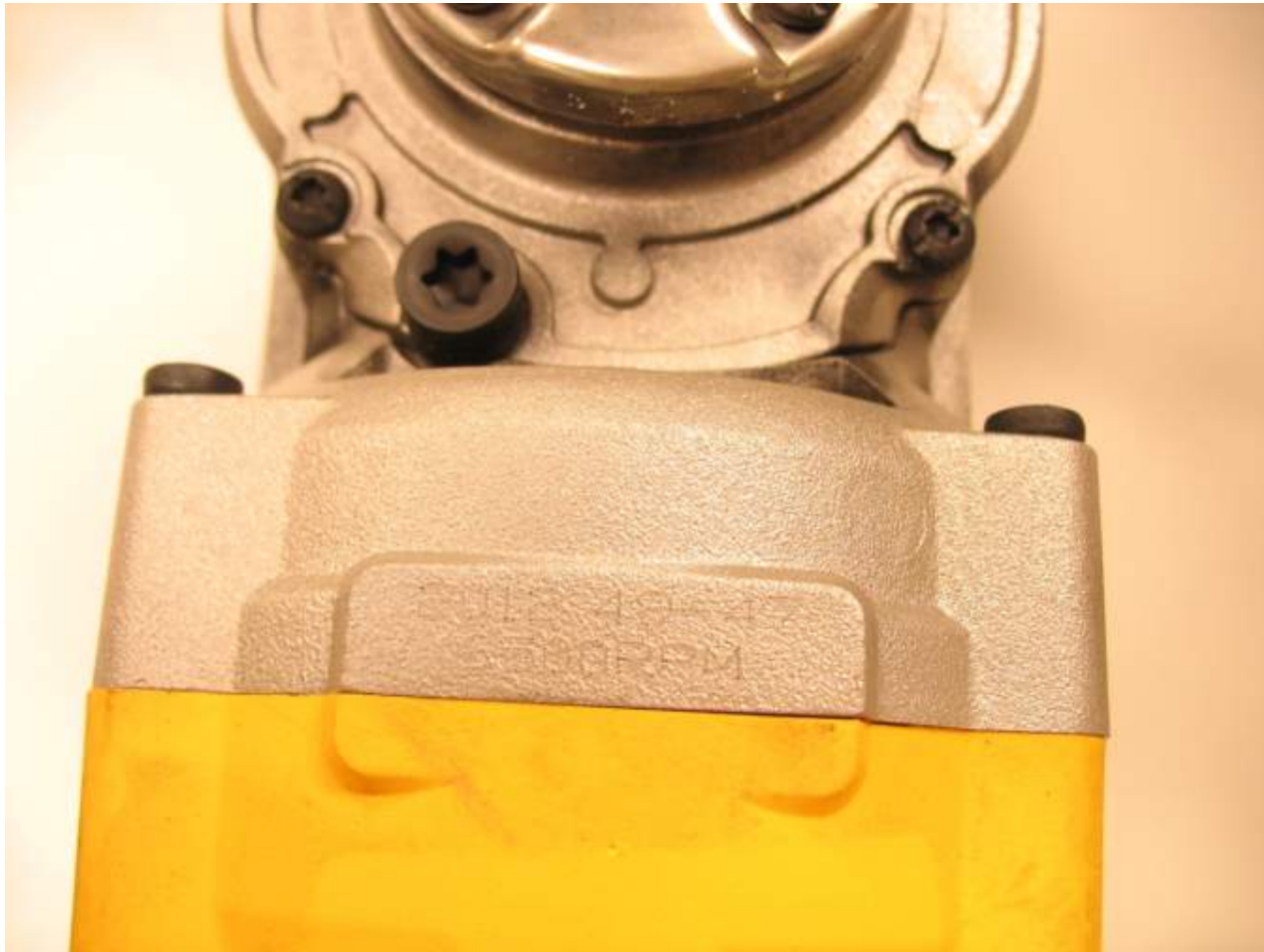


Large Angle Grinder Servicing Tips and Tricks

P Miller 1/20/13

Date Code printed on bottom of Gearcase



Unit cat #, type # & date code also printed on inside of both Brush Doors



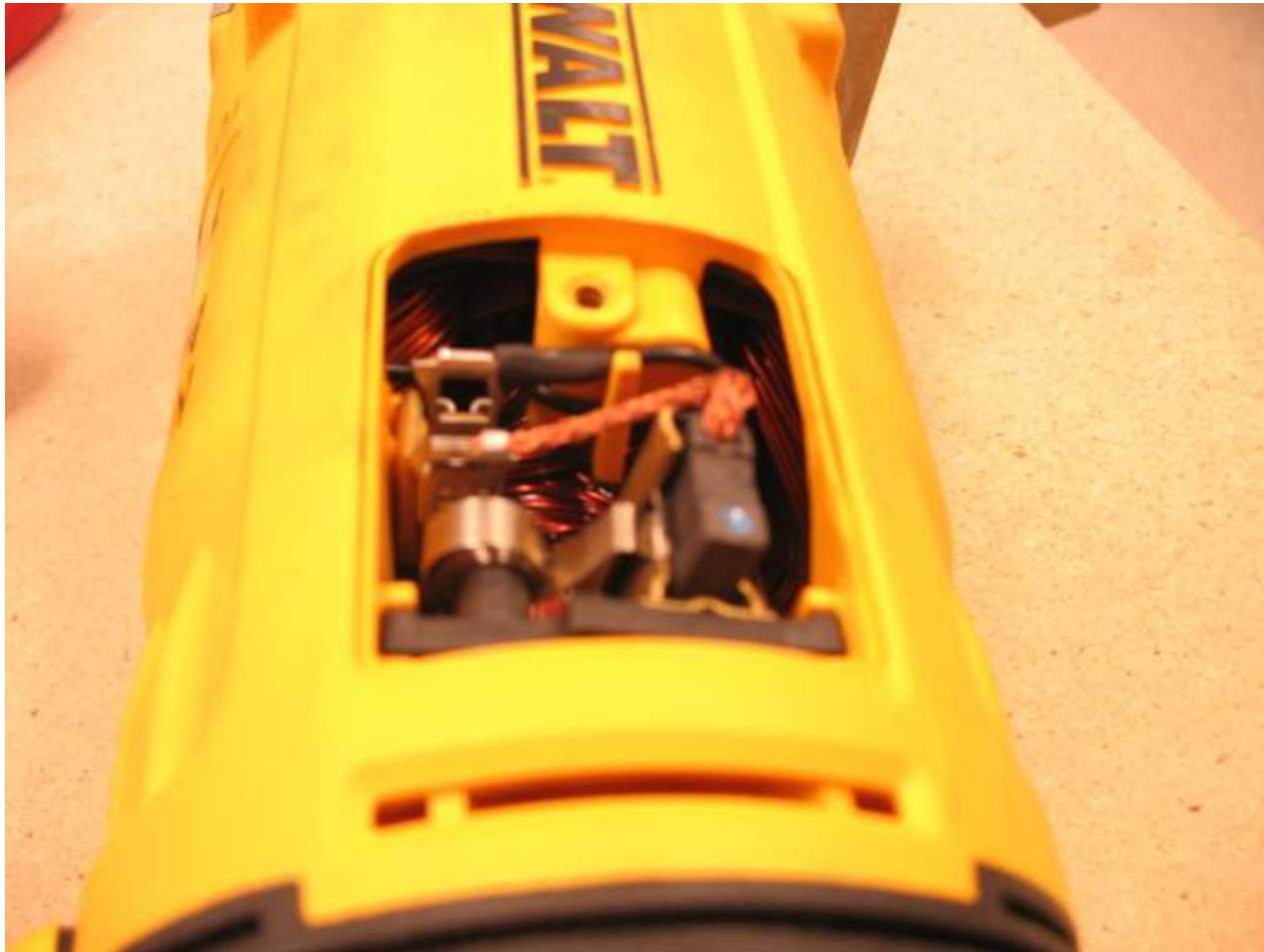
Remove SA Gearcase Cover by holding Spindle and tapping on bottom of Gearcase



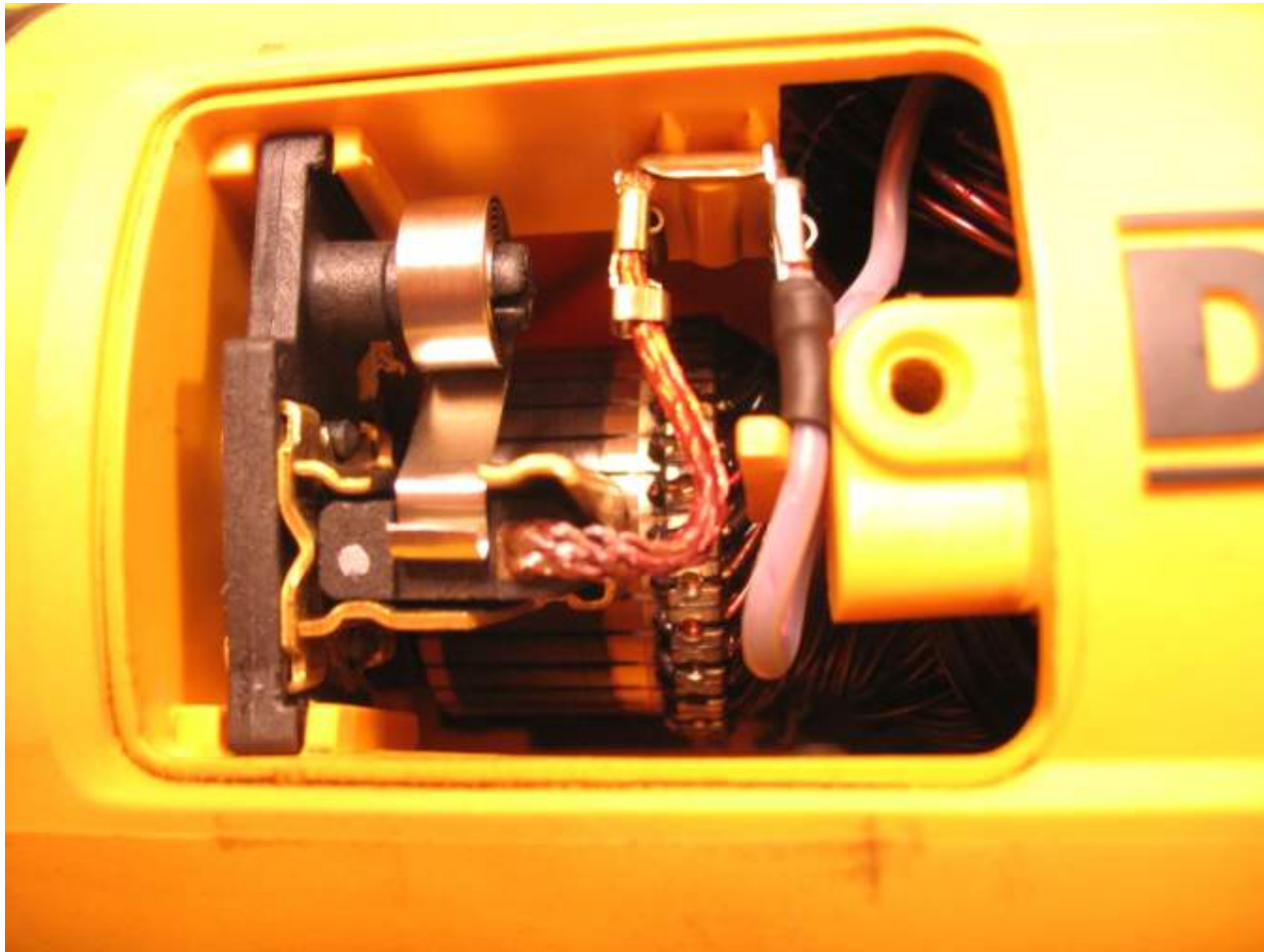
SA Gearcase Cover is not serviceable



Prior to removing SA Armature stow Brushes



Note correct shunt wire route



Use 13mm wrench and hold Spindle Lock Button while loosening Pinion Nut



Gearcase should detach from Armature and Field Case with Nut removed



Armature can be pulled out



DES Fan Assy (dust extraction system) will pull off Fieldcase once screws are loosened



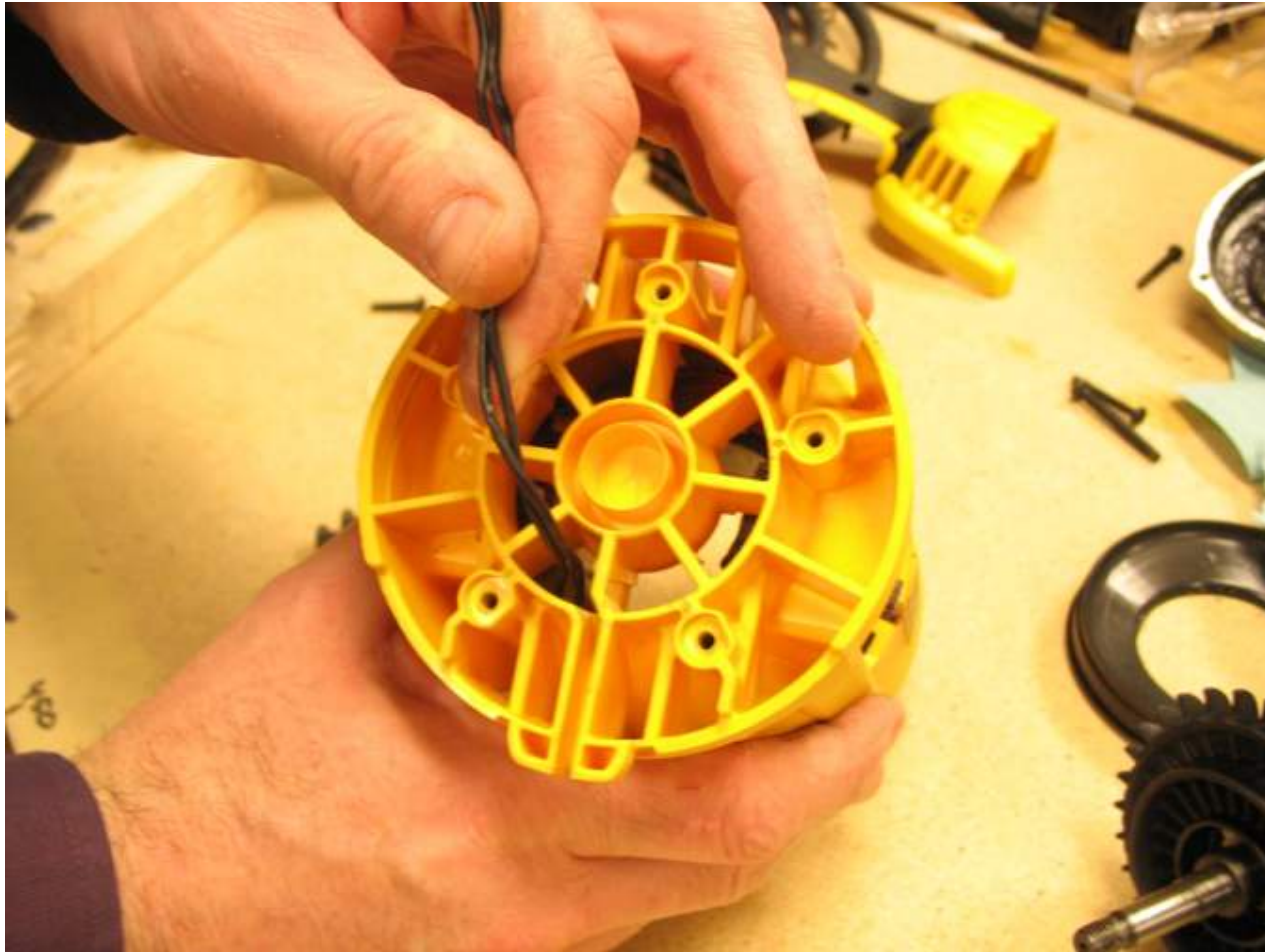
SA DES in not serviceable



Note: Field Wires route thru Anti-Vibration Ring loop



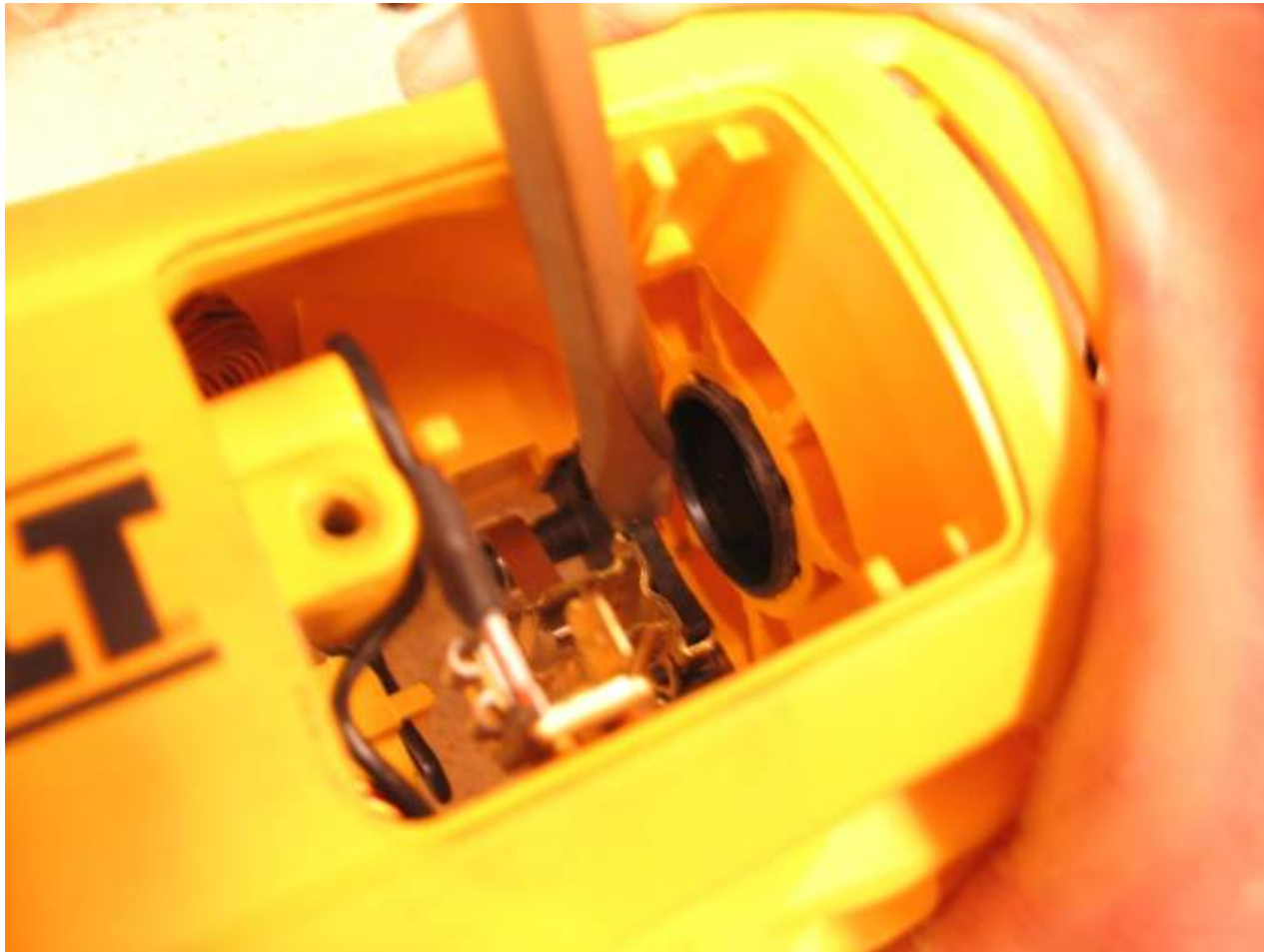
Note: Field Wires route thru one particular opening



Brush Holders pushed out using a screw driver – note position (push on plastic only)



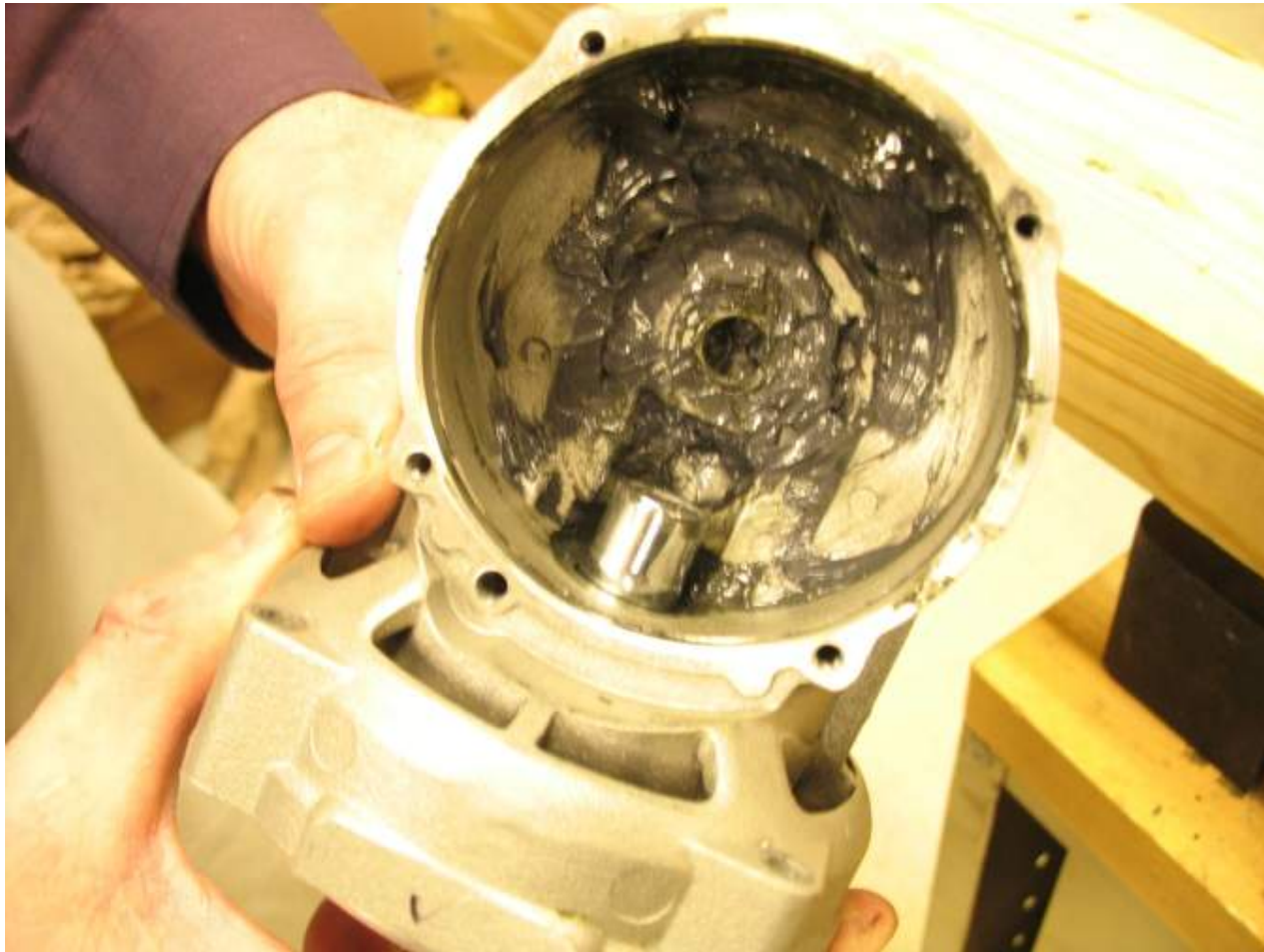
Brush Holders pushed out using a screw driver – note position (push on plastic only)



Removing Fan End Bearing requires a puller or can be pressed out as follows



Place small socket in pocket



Position bar horizontal as such and push on bar with press nearest to Gearcase



Fan End Bearing should push straight out of Gearcase pocket

