

Design improvements for DCN690/691/692/695 Type 2 Nailers





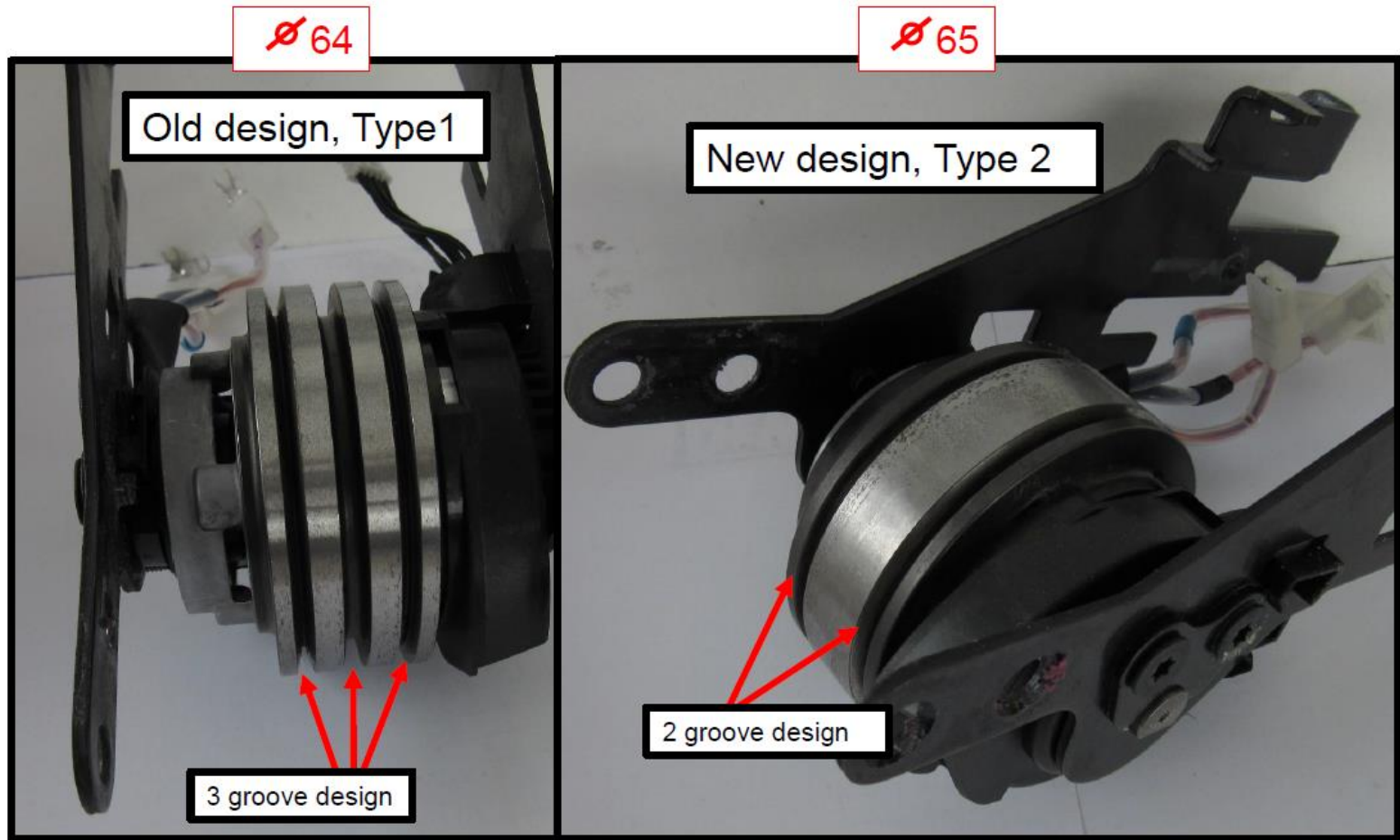
Main changes on DCN690/691/692/695 Type 2

In order to increase the live time of the return springs, we reduced the rpm of the flywheel.

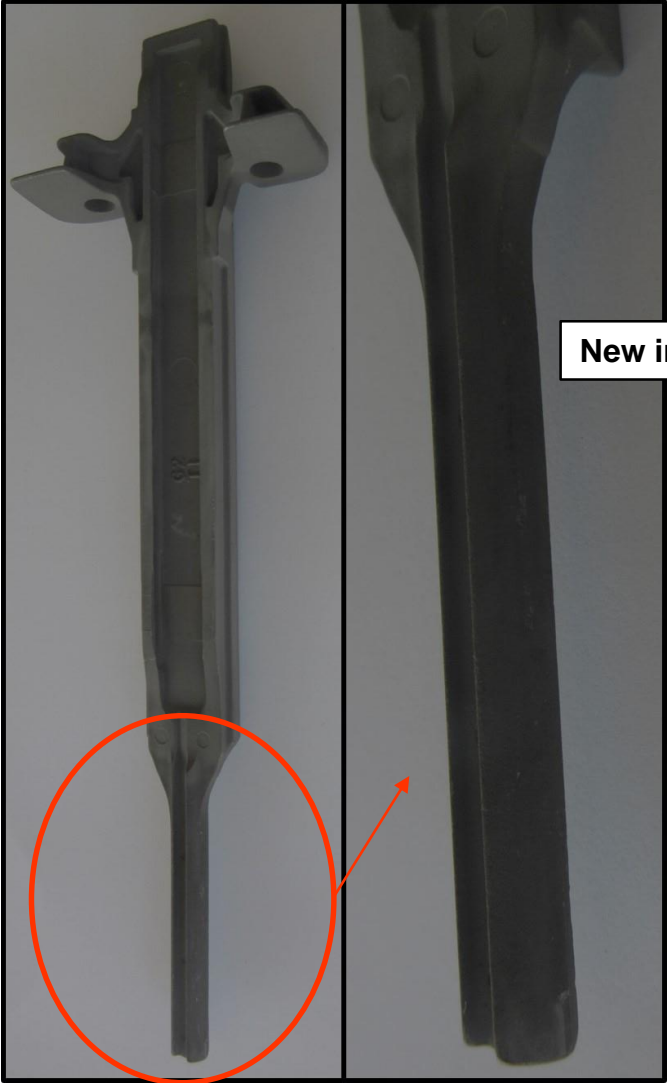
	Speed 1	Speed 2
Type 1	1300 1/min	11000 1/min
Type 2	1100 1/min	9000 1/min

In order to keep the impact on Type 2 version, means no power losses, we increased the weight of the flywheel on Type 2 version

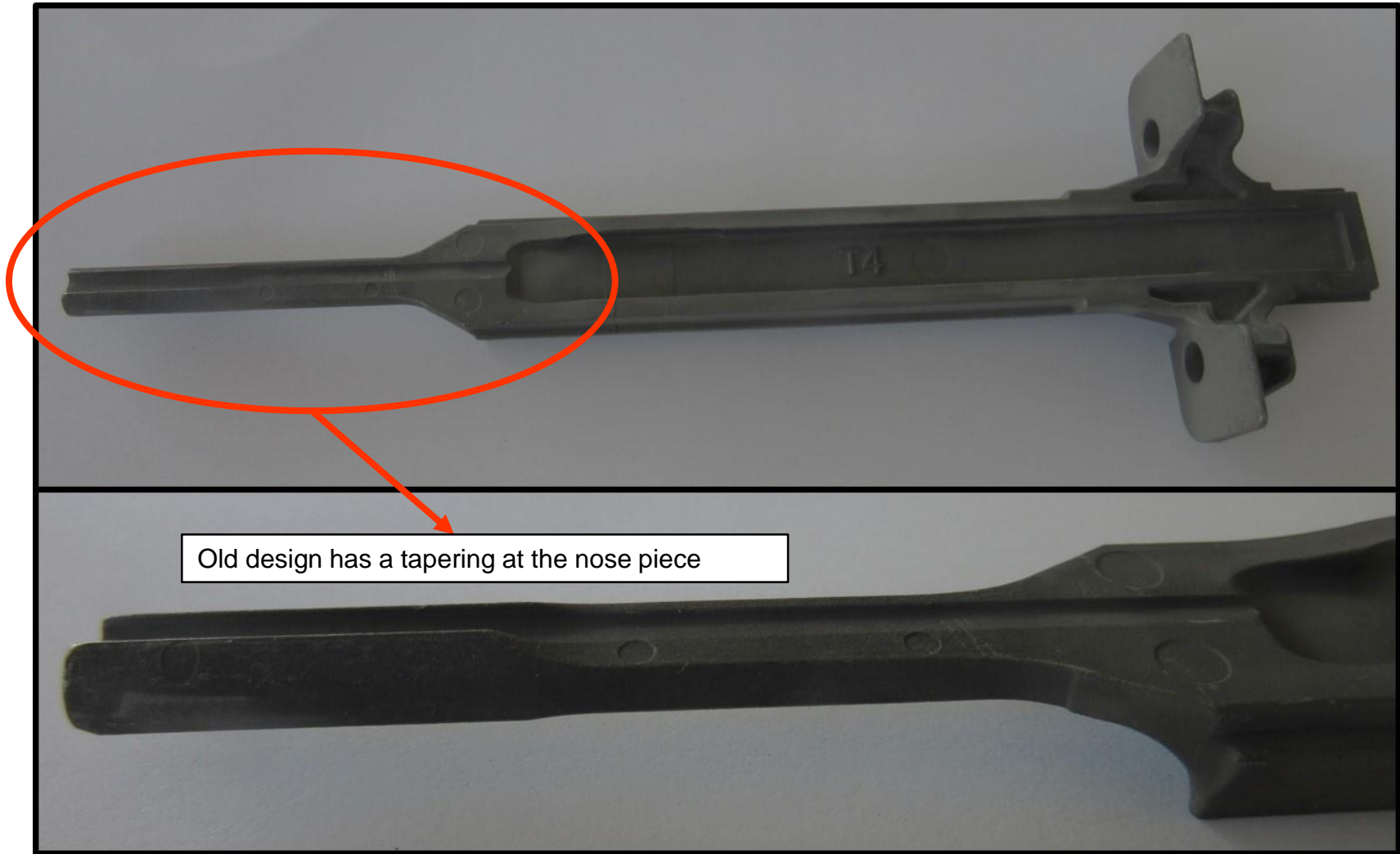
DCN69... Type 2 Improvement



The nose piece on the profile Type 1 version gets bent, depending on application, fast. In order to made it more solid, we have changed the design.

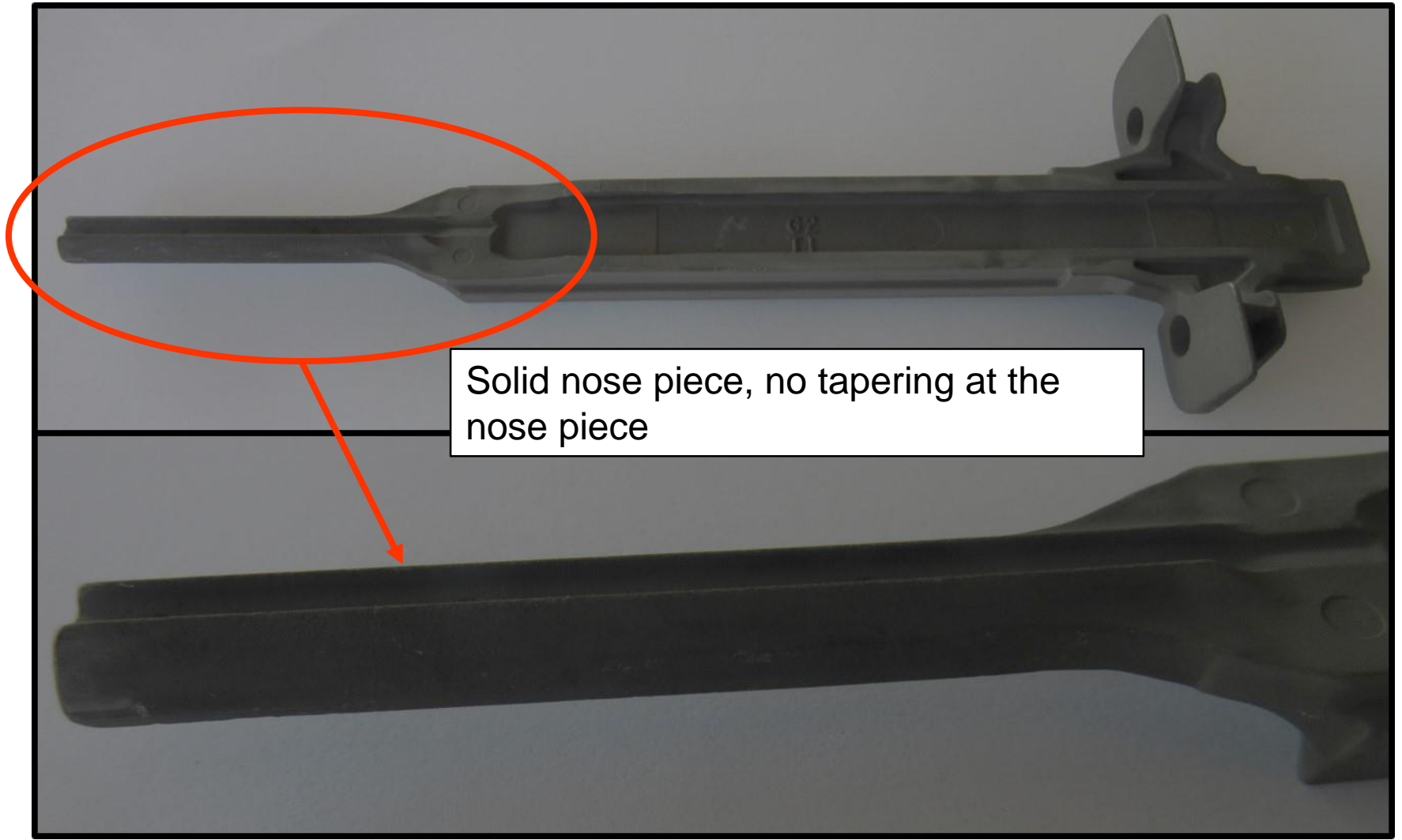


Profile Type 1 version

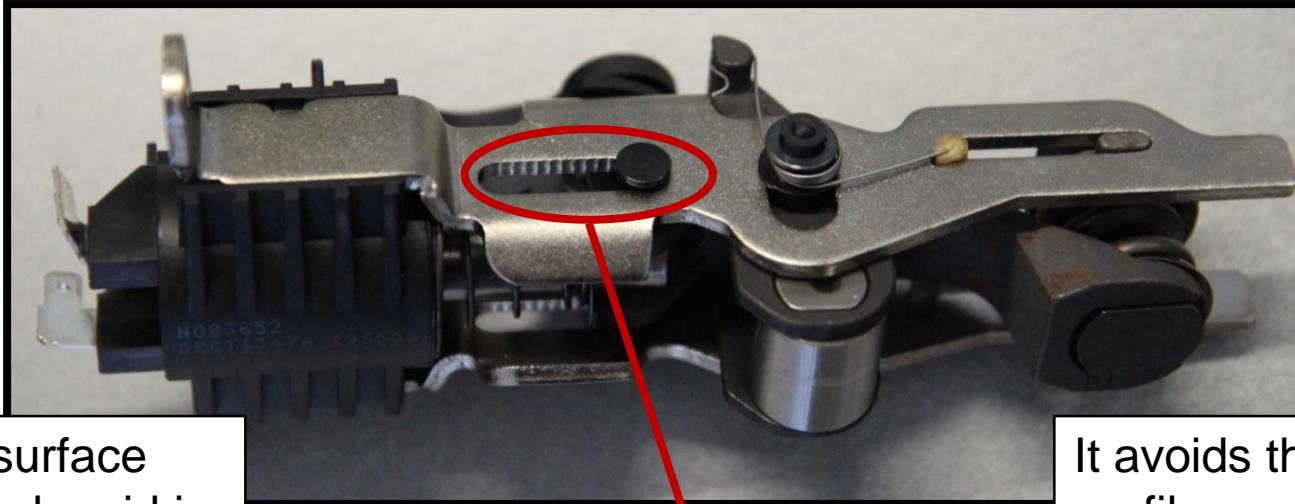


Old design has a tapering at the nose piece

Profile Type 2 version

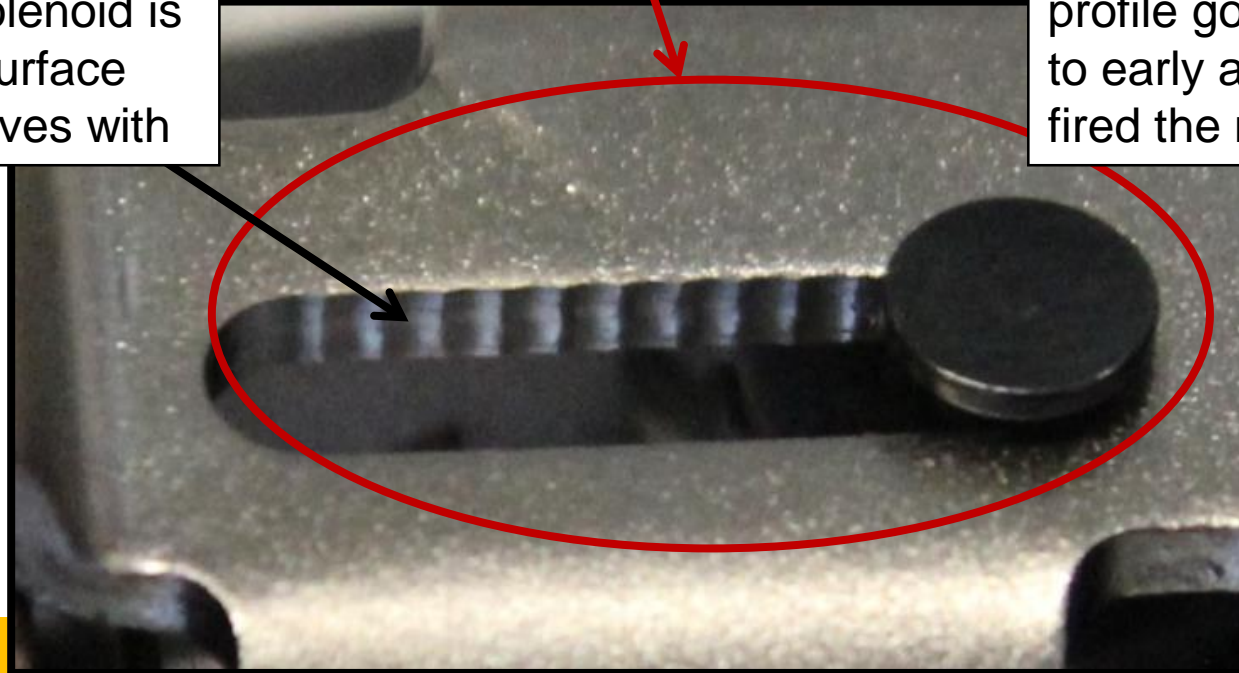


Changes have be done on Type 1 version



The upper surface where the solenoid is guided the surface has got grooves with

It avoids the profile goes back to early after it fired the nail



Changes have be done on Type 1 version

Spring beam

