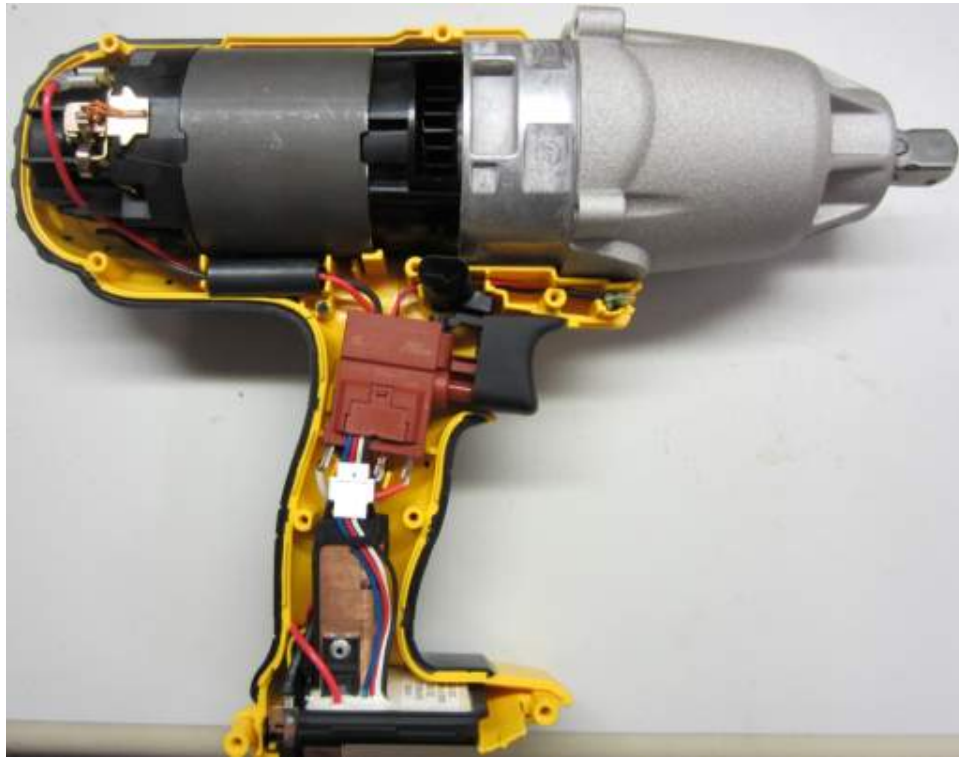
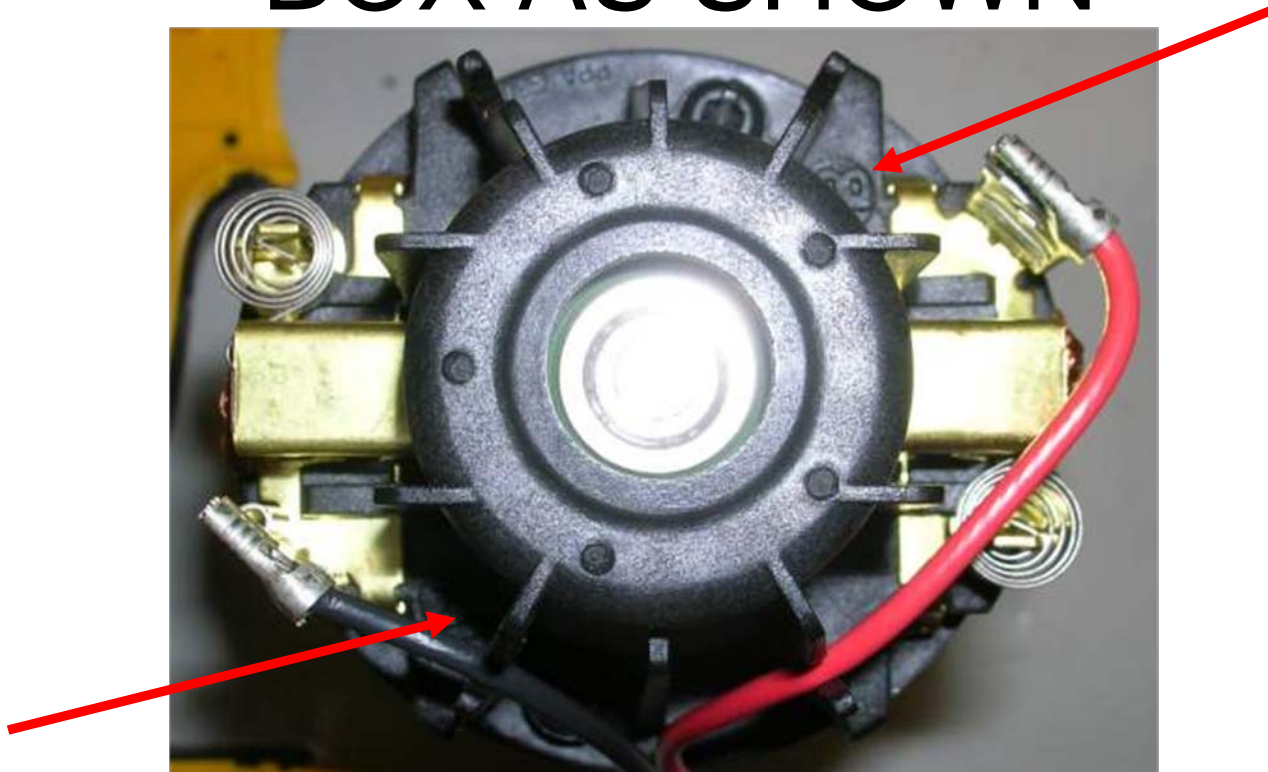


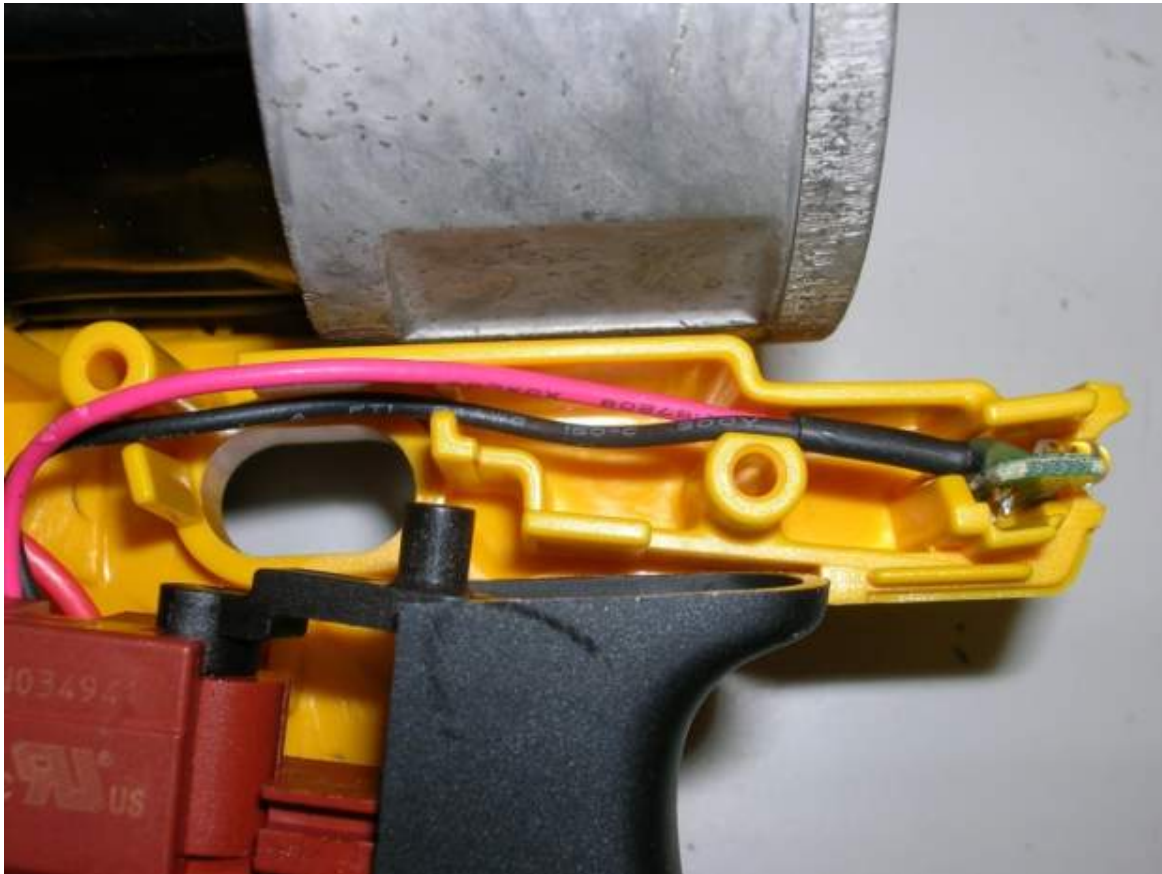
Wiring Procedure



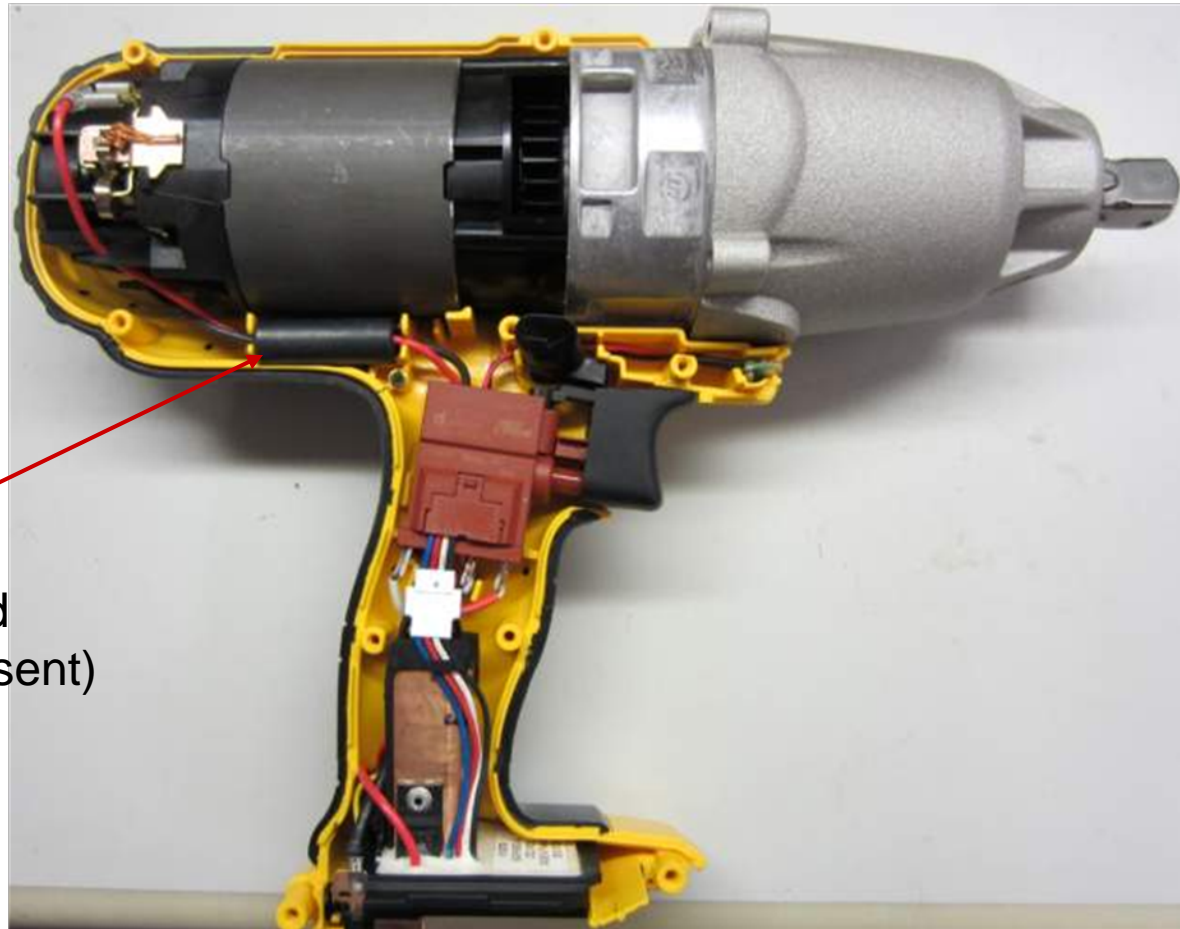
ATTACH WIRE LEADS TO BRUSH
BOX
RED TO "B" ; BLACK TO "A"
ROUTE WIRES THROUGH BRUSH
BOX AS SHOWN



DCF889 TYPE 1
INSERT LED AND WIRE AS
SHOWN.



INSERT SA MOTOR AND SA SWITCH
AND MODULE INTO HOUSING.
VERIFY WIRE ROUTING AS SHOWN



Bead to be placed
into pocket (if present)

ENSURE MODULE, TERMINAL BLOCK AND SA TERMINAL BLOCK SPRING ARE FULLY IN PLACE

