

No-run condition

Cord damaged?

YES

Service cord.

NO

Remove motor cover.

Does motor turn by hand?

NO

Mechanical service needed.

YES

Connect tool to AC power.
Pull trigger switch.

AC voltage at module connector?

NO

Remove power.

Go to switch diagnosis (page 2)

YES

Remove power.
Examine motor area.

Brushes and brush wires OK?

NO

Service brushes.

YES

Measure motor resistance at module connector.

Motor resistance less than 10 ohms?

NO

Remove brushes.
Examine motor field.

Measure resistance of each field winding.

Winding resistances less than 10 ohms?

NO

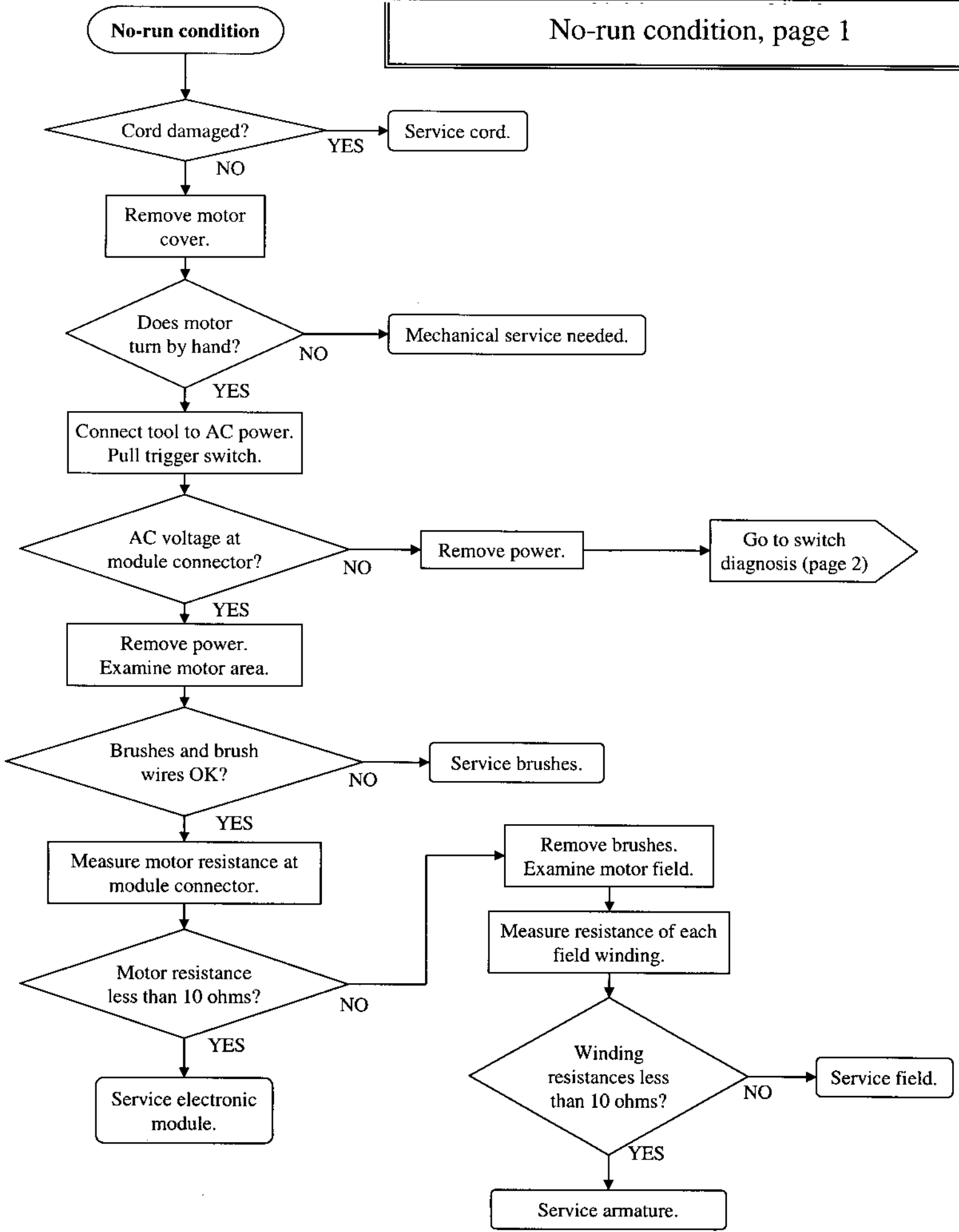
Service field.

YES

Service electronic module.

YES

Service armature.



Switch diagnosis
(from page 1)

